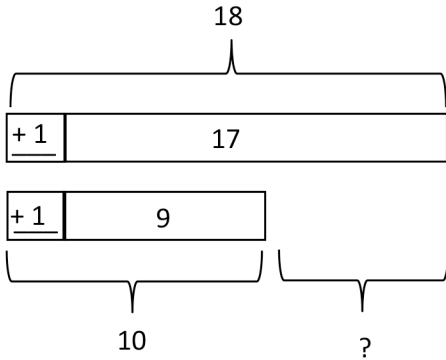


Name _____

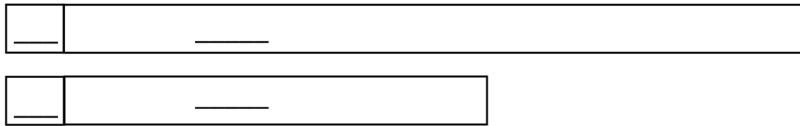
Date _____

1. Solve. Draw and label a tape diagram to subtract 10, 20, 30, 40, etc.

a. $17 - 9 = \underline{18 - 10} = \underline{\quad}$



b. $33 - 19 = \underline{\quad} = \underline{\quad}$

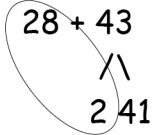


c. $60 - 29 = \underline{\quad} = \underline{\quad}$

d. $56 - 38 = \underline{\quad} = \underline{\quad}$

2. Solve. Draw a number bond to add 10, 20, 30, 40, etc.

a. $28 + 43 = \underline{30 + 41} = \underline{\quad}$



b. $49 + 26 = \underline{\quad} = \underline{\quad}$

c. $43 + 19 = \underline{\quad} = \underline{\quad}$

d. $67 + 28 = \underline{\quad} = \underline{\quad}$

3. Kylie has 28 more oranges than Cynthia. Kylie has 63 oranges. How many oranges does Cynthia have? Draw a tape diagram or number bond to solve.

Answer Key

1. Tape diagram drawn and labeled

a. $17 - 9 = 18 - 10 = 8$

b. $33 - 19 = 34 - 20 = 14$

c. $60 - 29 = 61 - 30 = 31$

d. $56 - 38 = 58 - 40 = 18$

2. Number bond drawn

a. $28 + 43 = 30 + 41 = 71$

b. $49 + 26 = 50 + 25 = 75$

c. $43 + 19 = 42 + 20 = 62$

d. $67 + 28 = 65 + 30 = 95$

3. Drawings will vary.

Cynthia has 35 oranges.