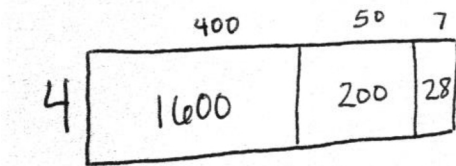


Name _____

Date _____

1. Arabelle solved the following division problem by drawing an area model.



- a. What division problem did she solve?
- b. Show a number bond to represent Arabelle's area model, and represent the total length using the distributive property.
-
2. a. Solve $816 \div 4$ using the area model. There is no remainder in this problem.
- b. Draw a number bond and use a written method to record your work from (a).

3. a. Draw an area model to solve $549 \div 3$.

b. Draw a number bond to represent this problem.

c. Record your work using the long division algorithm.

4. a. Draw an area model to solve $2,762 \div 2$.

b. Draw a number bond to represent this problem.

c. Record your work using the long division algorithm.

Answer Key

1. a. $1,828 \div 4 = 457$
b. Whole: 1,828; parts: 1,600, 200, 28
 $(1,600 \div 4) + (200 \div 4) + (28 \div 4) = 400 + 50 + 7 = 457$
2. a. 204; area model accurately drawn
b. Answers will vary.
3. a. 183; area model accurately drawn
b. Answers will vary.
c. Algorithm accurately recorded
4. a. 1,381; area model accurately drawn
b. Answers will vary.
c. Algorithm accurately recorded