

Name: _____

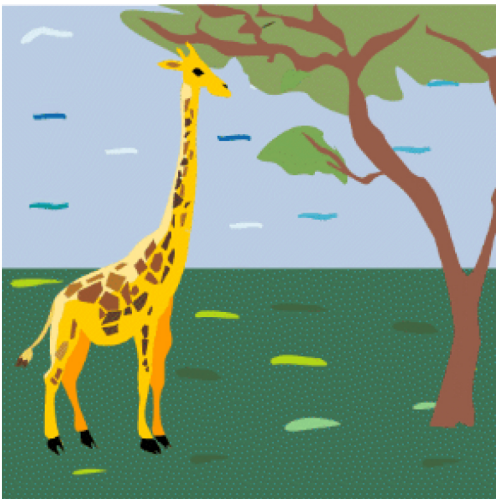
Giraffes live in small groups of around six. They can run 35 miles per hour. They can live for about 25 years.

They are thought of as gentle creatures, but sometimes the males do fight.

They have very long legs and long necks, which helps them to reach their food. They eat leaves that are high up in tall trees.

But their long legs make it difficult for them to bend down to get a drink.

Which parts of the text does this image clarify?



Answer Key

Their long legs and necks help them to reach their food. They eat leaves that are high up in trees.